

# The dark shadow of data quality and activity based funding in mental health

**Tim Coombs**  
**Sharon Tomamichel**  
**Michelle Hudoba**

# At the completion of this presentation

- Understand the context of the collection
- Describe the data elements that may contribute to ABF in mental health
- Describe the impact of data quality on the way a mental health service is described
- Impact of change in information system
- Identify the challenges facing LHD's in improving data quality

# Demographics



- Total Population 406-873
- 8.5% older than 75
- 6.1% younger than 5
- 2.9% Aboriginal
- 25% born overseas

# The present and the future

- Activity Based Management (ABM) is about using the knowledge and information available to make more informed decisions. In effect, it provides a window into the health system where activity, cost and performance information is used to attain strategic, clinical and operational objectives.

# Information System Development

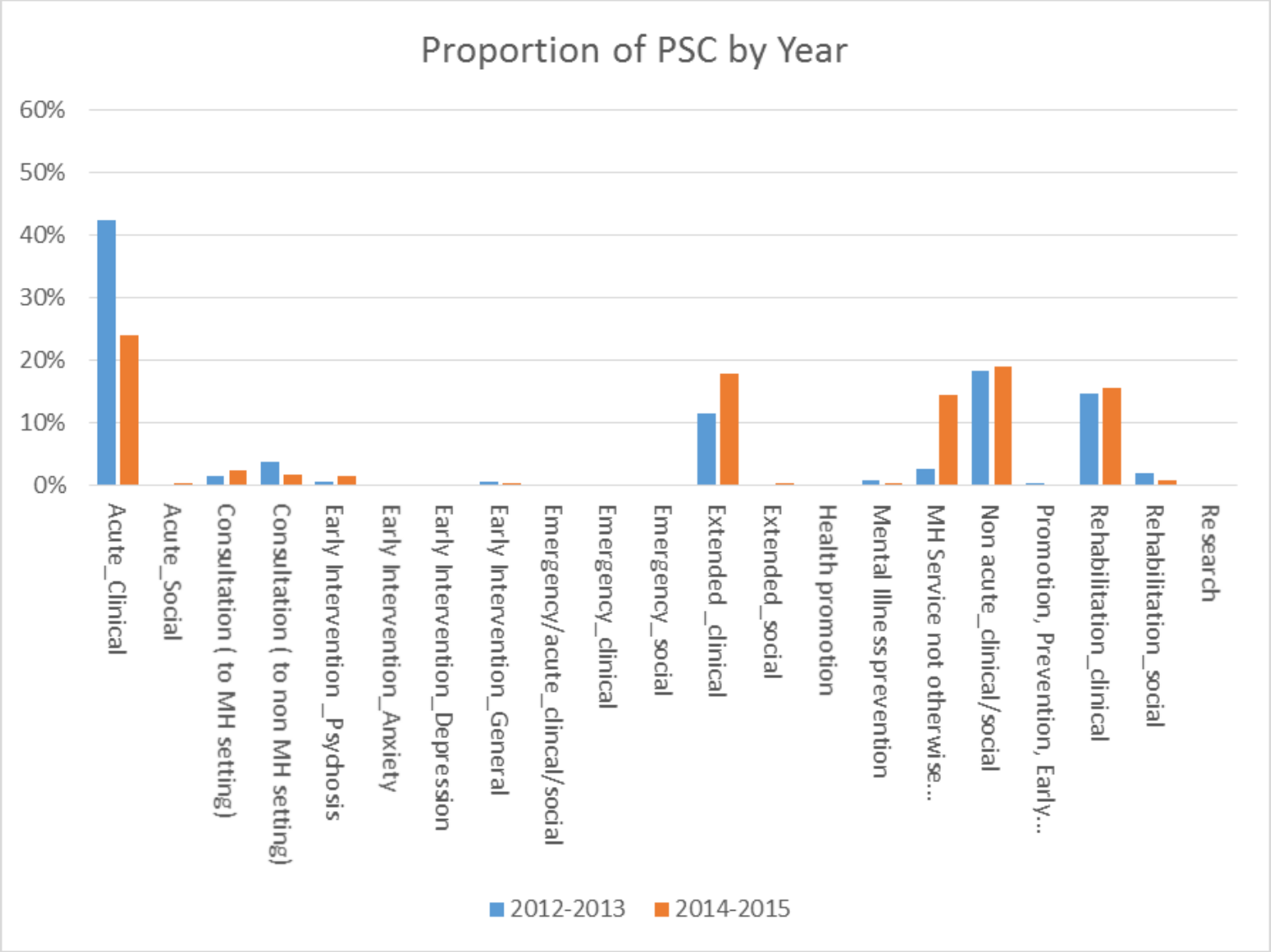
- Transition between systems
- Significant investment
  - Information collection, storage and reporting ✓
  - Transition ✓
    - Standalone database
    - eMR (Electronic medical record)
  - Training ✓
  - ABF /ABM ✗

# Data Element

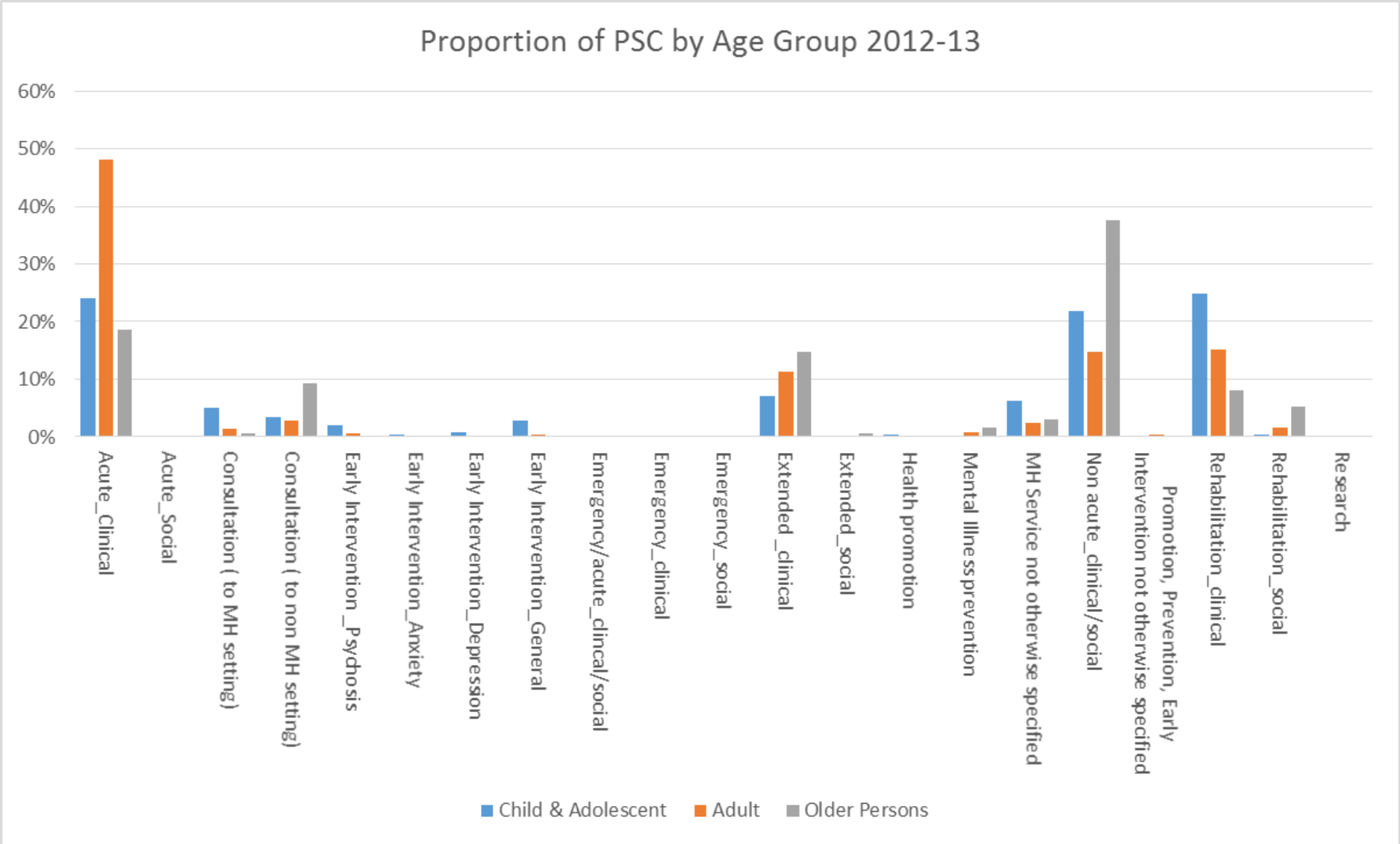
- Principal Service Category
  - Mental Health Data Dictionary 3.0 March 2006

1. Acute\_Clinical
2. Acute\_Social
3. Consultation ( to MH setting)
4. Consultation ( to non MH setting)
5. Early Intervention\_Psychosis
6. Early Intervention\_Anxiety
7. Early Intervention\_Depression
8. Early Intervention\_General
9. Emergency/acute\_clinical/social
10. Emergency\_clinical
11. Extended\_clinical
12. Extended\_social
13. Health promotion
14. Mental Illness prevention
15. MH Service not otherwise specified
16. Non acute\_clinical/social
17. Promotion, Prevention, Early Intervention not otherwise specified
18. Rehabilitation\_clinical
19. Rehabilitation\_social
20. Research

# Results

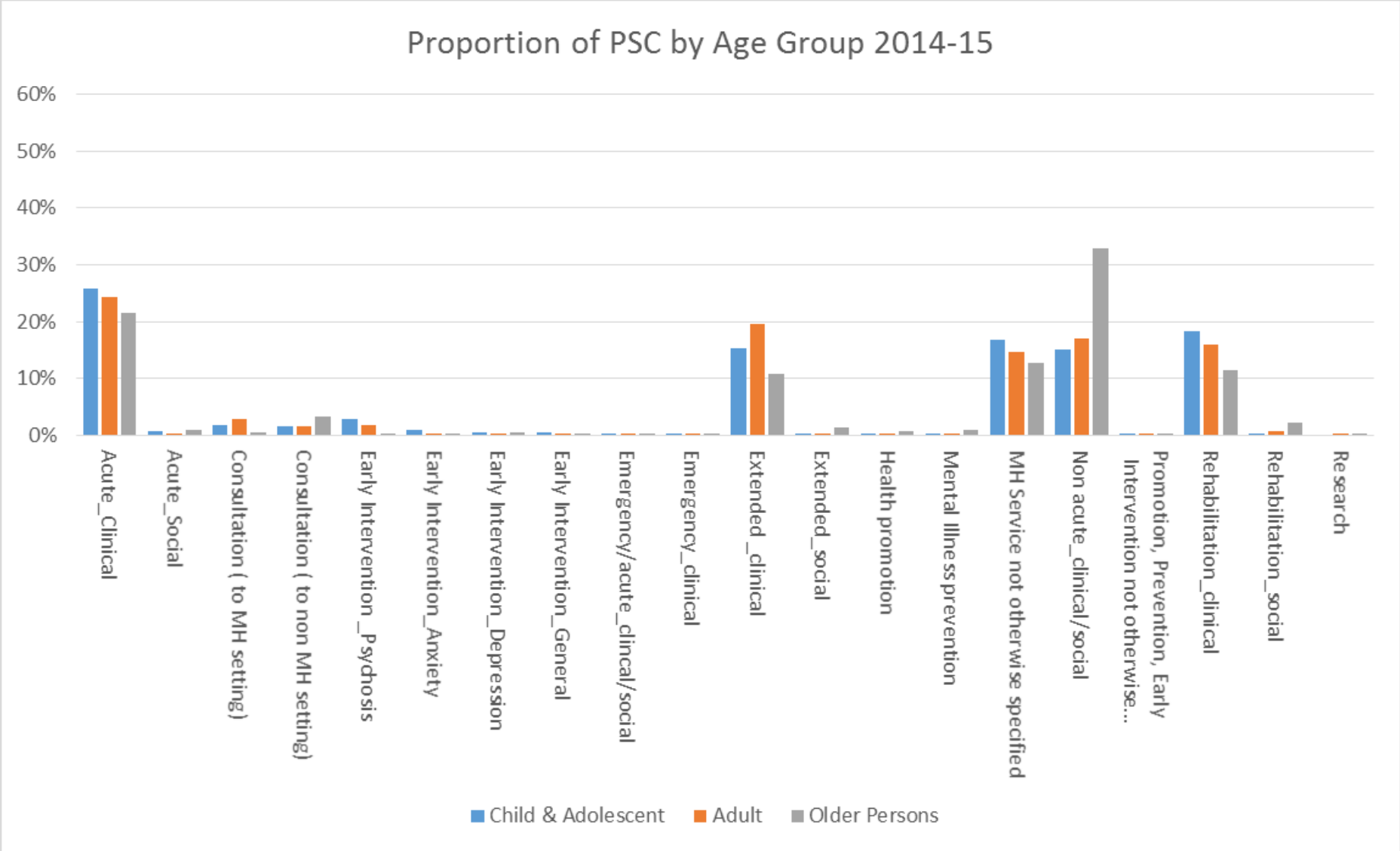


# Results





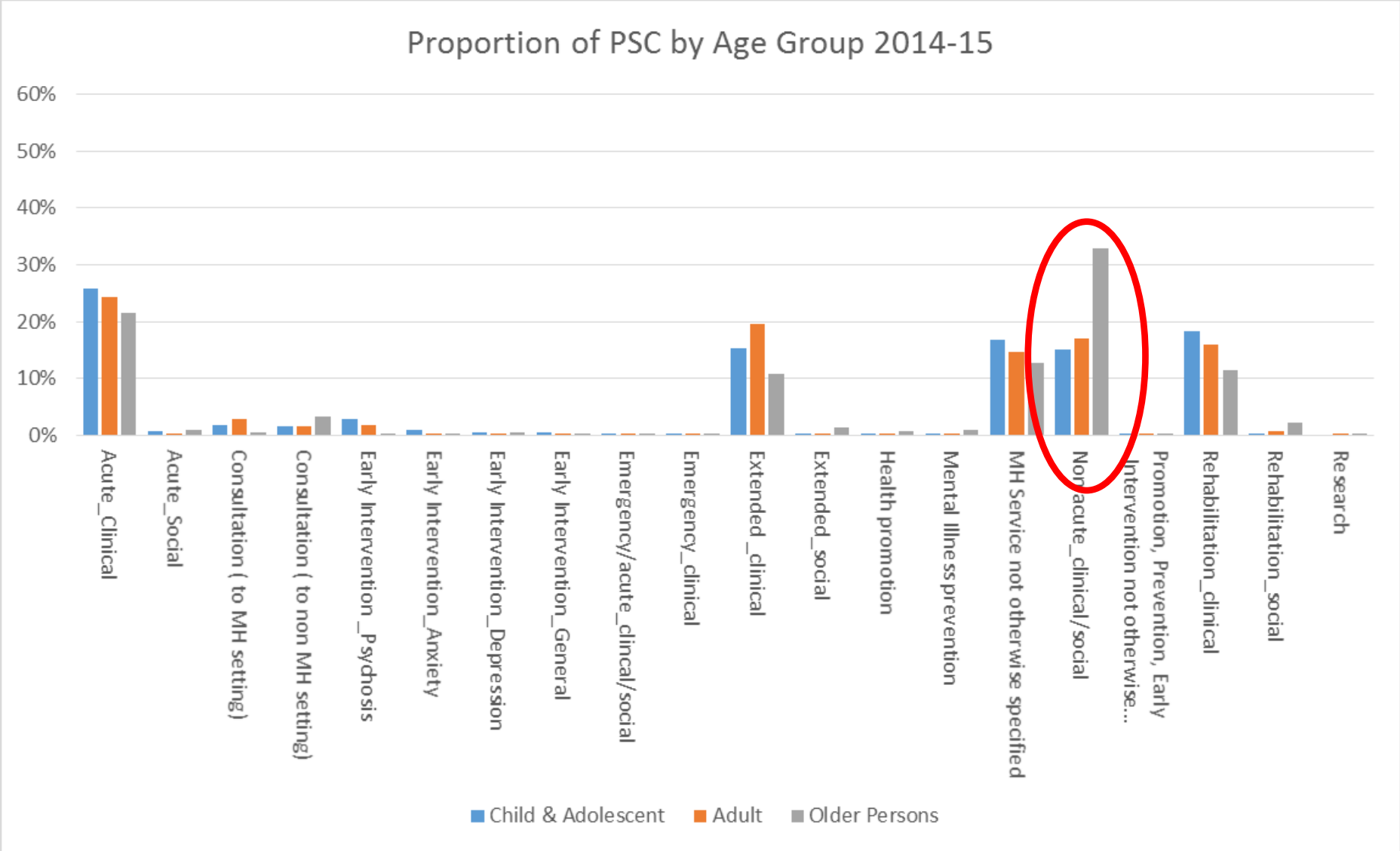
# Results



# Definitions

Code	Definition
Acute clinical	<p>Service provision for acute episodes of mental illness characterised by recent onset of severe clinical symptoms that have potential for prolonged dysfunction or risk to self or others.</p> <p>Treatment is focused on clinical symptom reduction with a reasonable expectation of substantial improvement in the short term.</p> <p>Clients may have no previous history of psychiatric illness or may be individuals with a continuing psychiatric disorder for whom there has been an acute exacerbation of clinical symptoms.</p> <p>Activity must primarily involve the client's physical health, medication, status under the Mental health Act, or other specific mental health issue.</p>
Extended clinical	<p>Client related service provision of an ongoing nature where improvement is not expected but where the goal is maintenance of current clinical status and relapse prevention. Activity must primarily involve the client's physical health, medication, status under the Mental Health Act, or other specific mental health issue.</p>
Non acute clinical/social	<p>Any non-acute client related service provision. <b>This is a non-preferred code</b> for use only when the distinctions between Rehabilitation Social/Clinical, Extended Clinical/Social cannot be made.</p>

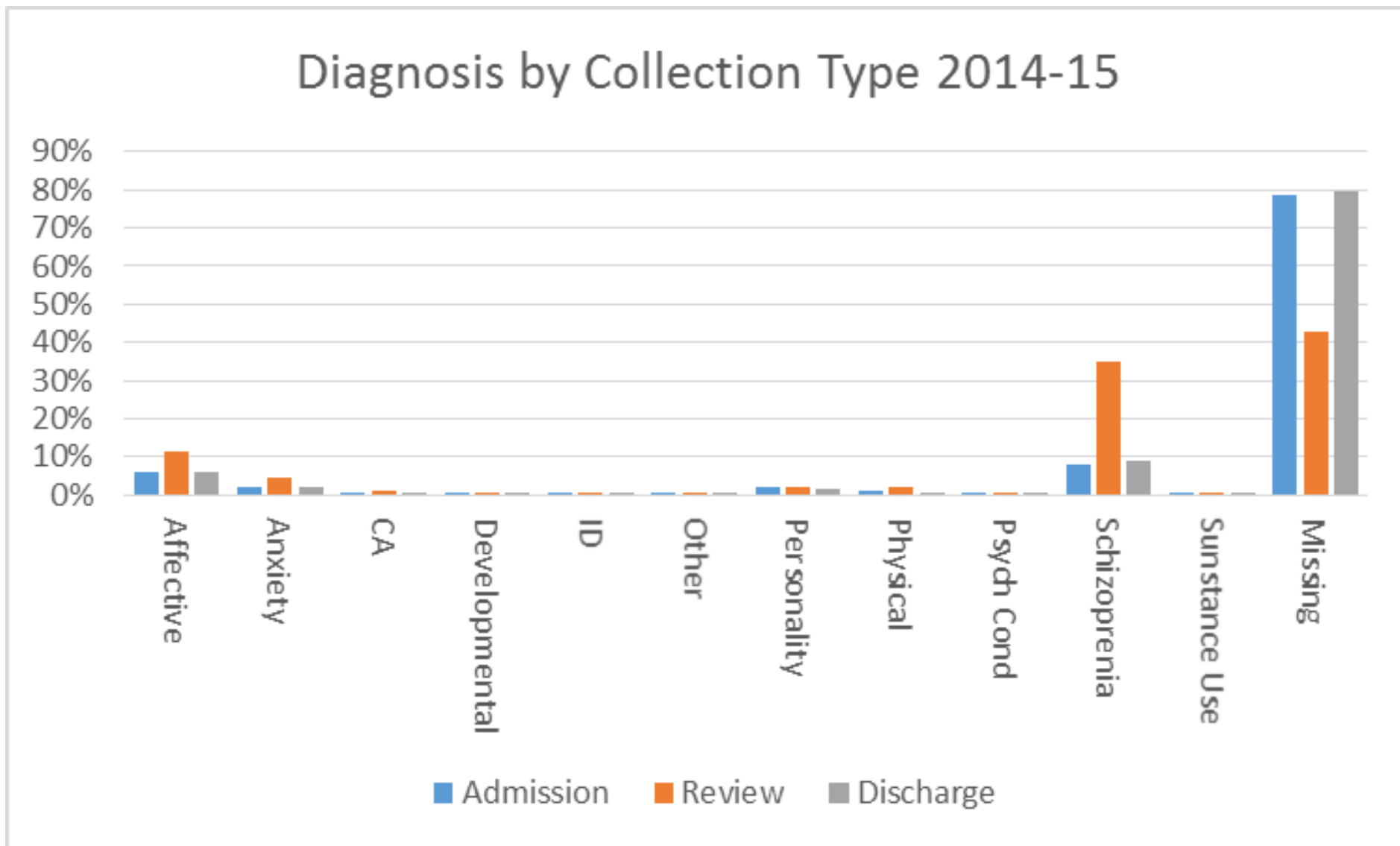
# Results



# Data Element

- **Focus of Care** is rated retrospectively. Clinicians are asked to identify which of one of four types of care focus best describes the primary goal of care provided to a consumer over the period preceding the Collection Occasion.
- **Acute**, where the primary goal is the short term reduction in severity of symptoms and/or personal distress associated with the recent onset or exacerbation of a psychiatric disorder.
- **Functional gain**, where the primary goal is to improve personal, social or occupational functioning or promote psychosocial adaptation in a patient with impairment arising from a psychiatric disorder.
- **Intensive extended**, where the primary goal is prevention or minimisation of further deterioration, and reduction of risk of harm in a patient who has a stable pattern of severe symptoms, frequent relapses or severe inability to function independently and is judged to require care over an indefinite period.
- **Maintenance**, where the primary goal is to maintain the level of functioning, minimise deterioration or prevent relapse where the patient has stabilised and functions relatively independently.

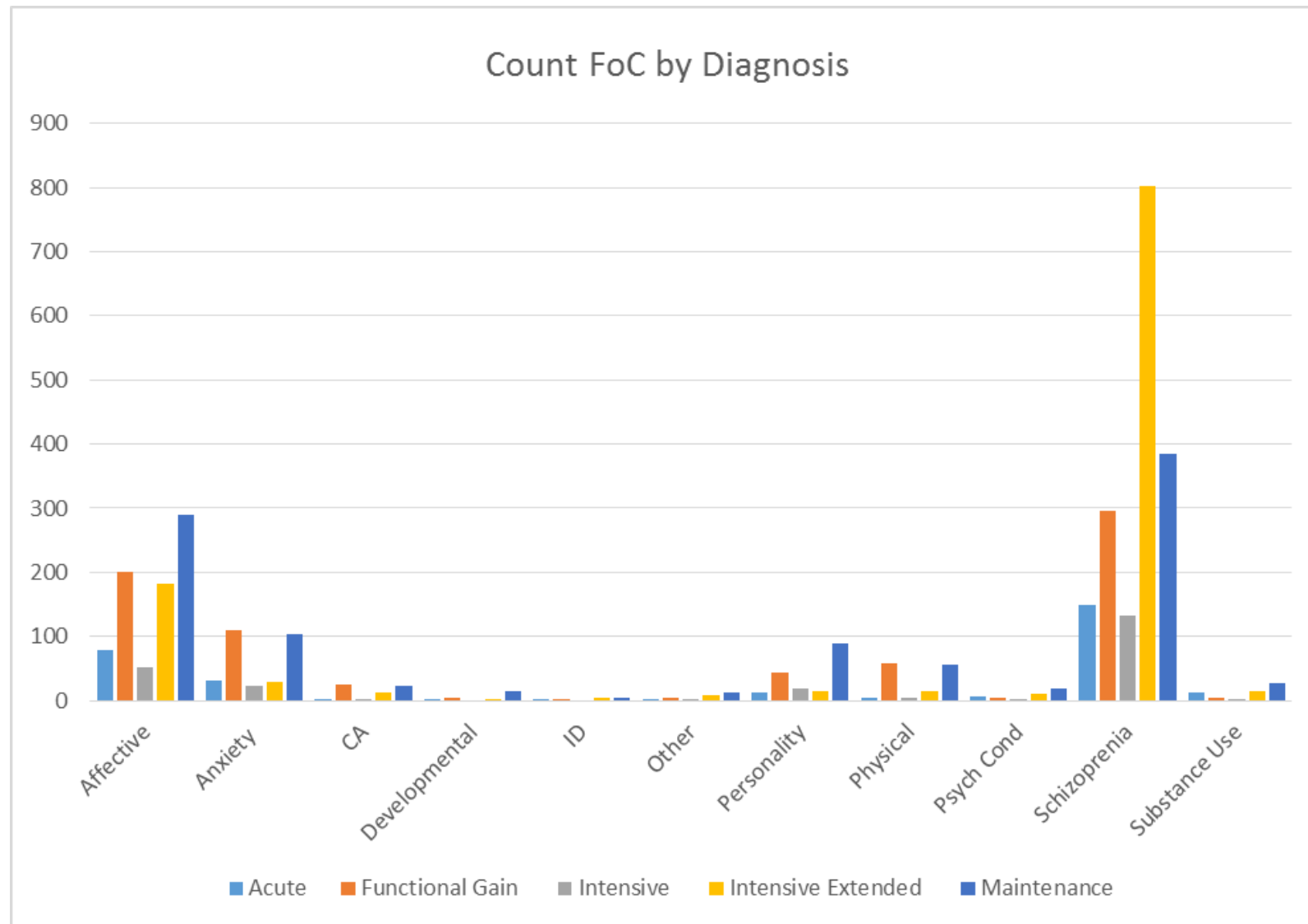
# Results 14/15



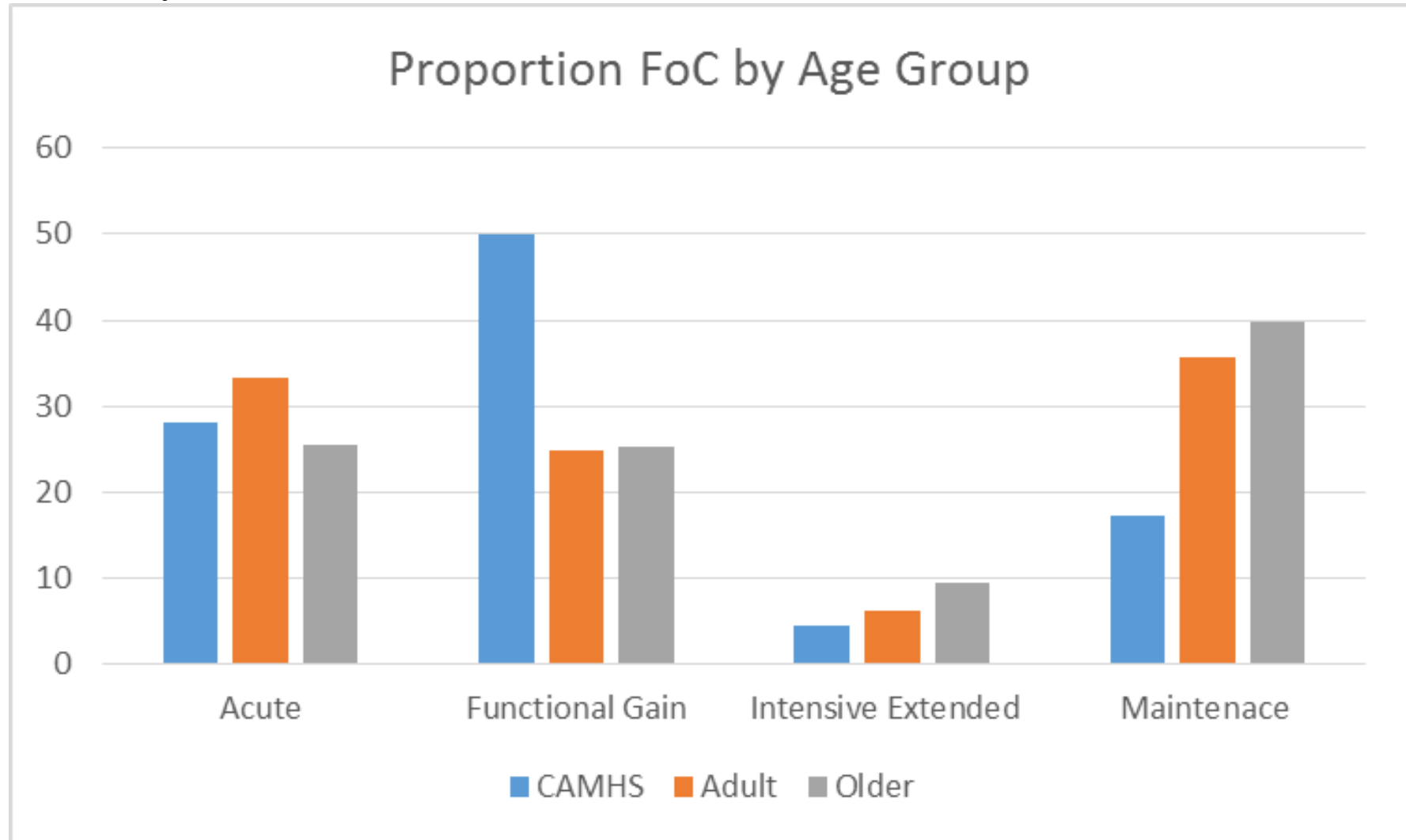
Total n = 10306

Diag n = 3400

# Results 14/15

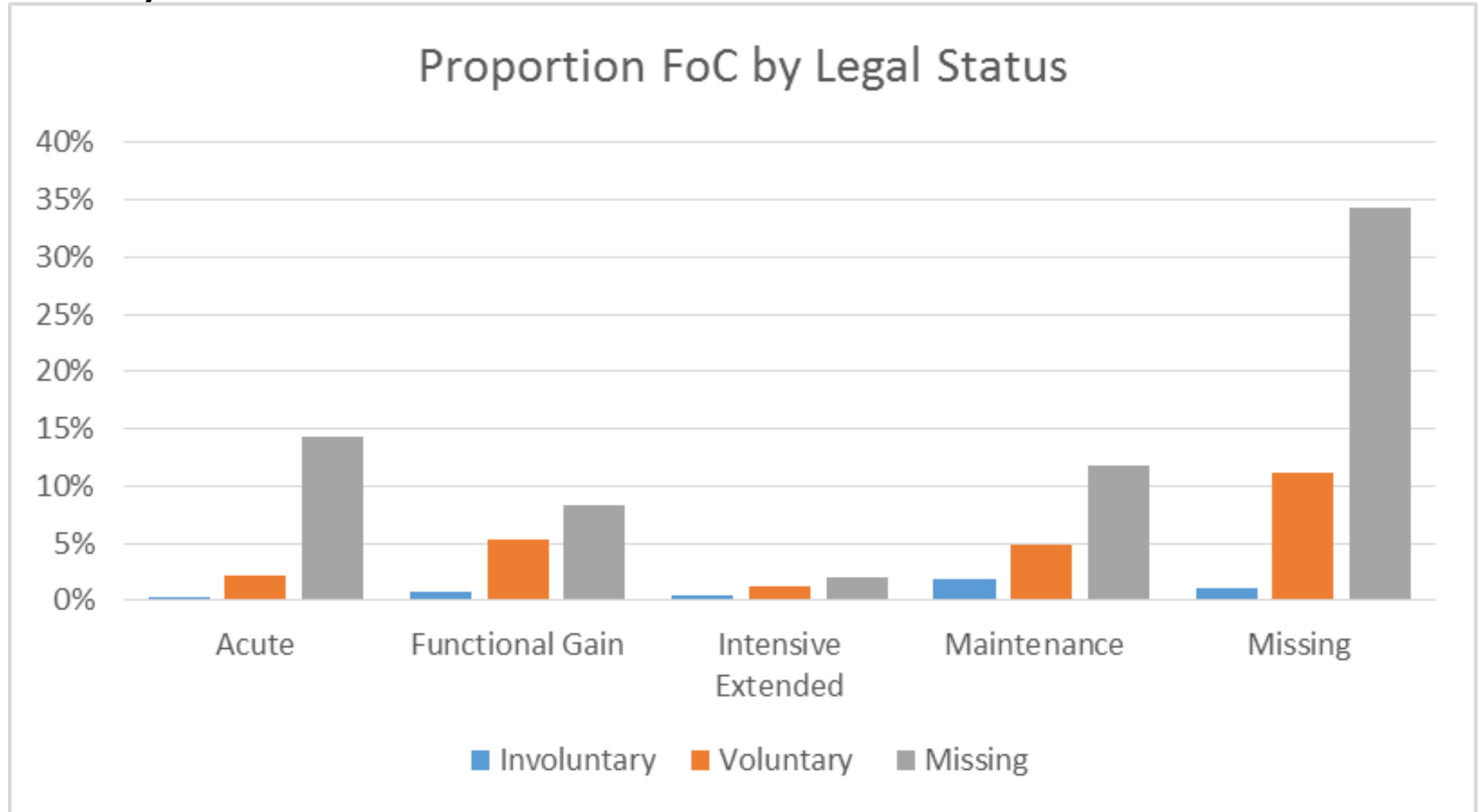


# Results 14/15



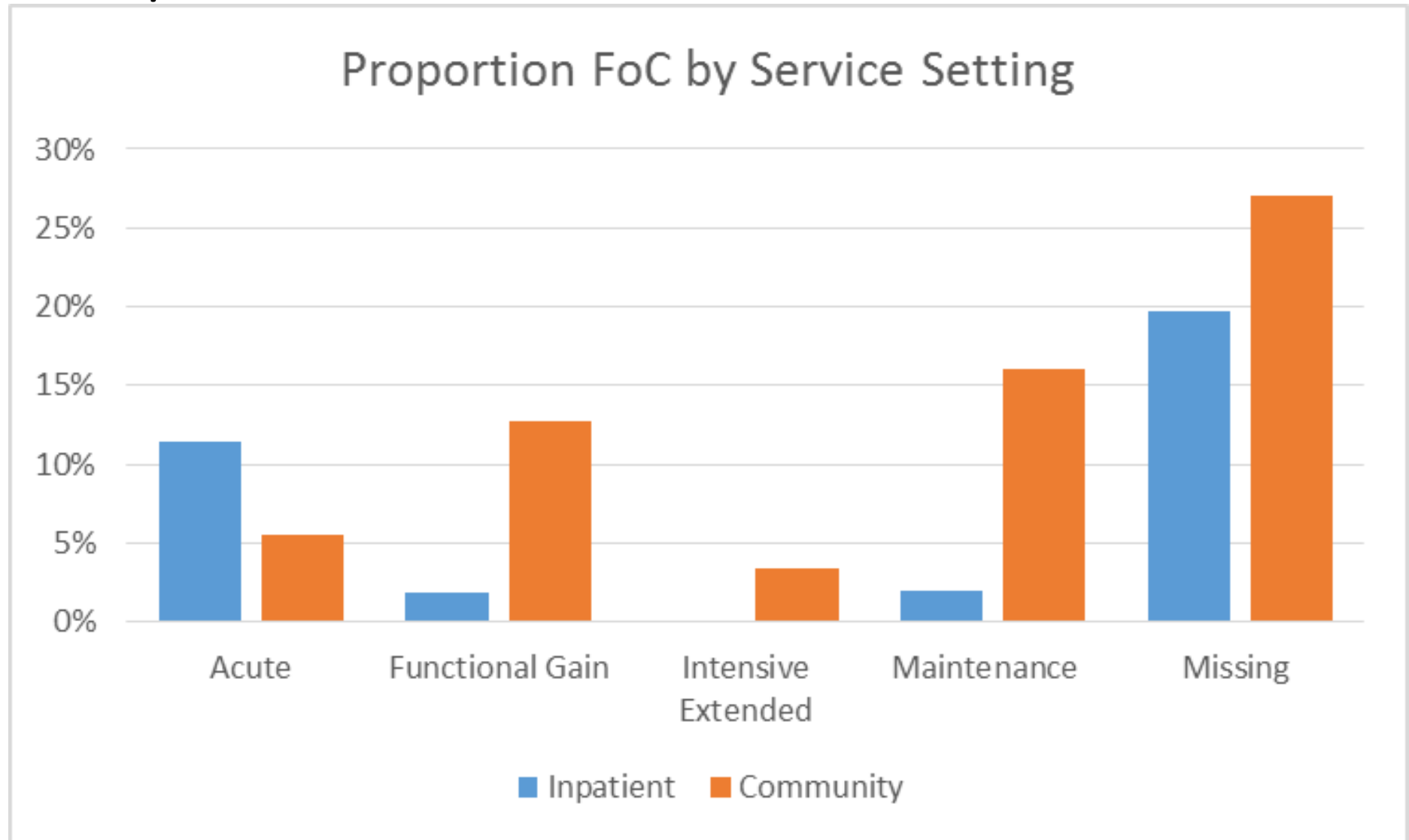
Admission collections excluded n = 5382

# Results 14/15





# Results 14/15



# Conclusion

- Both data elements describe the types of activity in mental health services
- Similarities in definitions (PSC, FoC, Phase???)
- Predominately described as acute work
- Issues of data quality
- Historical, “they choose one and stick with it”
- Analysis
  - Hardware
  - Software

Thank You