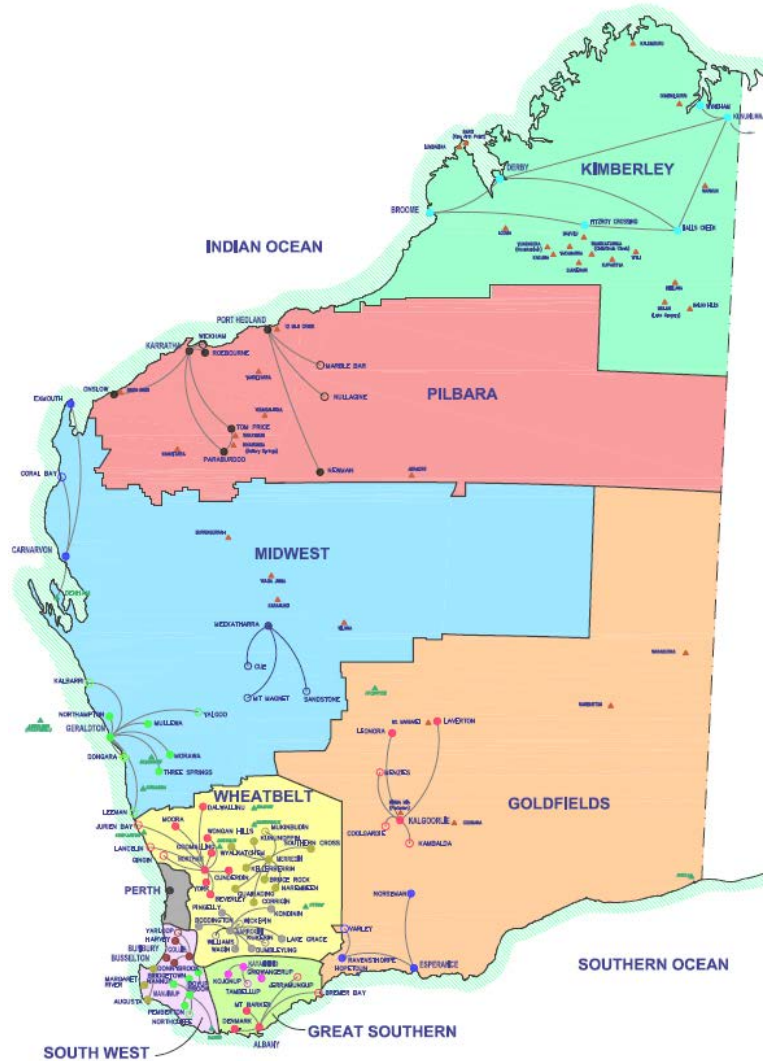




Government of **Western Australia**
Department of **Health**
WA Cancer and Palliative Care Network

Quality data for palliative care: challenges and a clinical perspective

Presented by Vi Tran



WA Health

Workforce

43,000 staff

Metropolitan

5 tertiary, 6 secondary

3 private/public

Country

13 health campuses

15 secondary

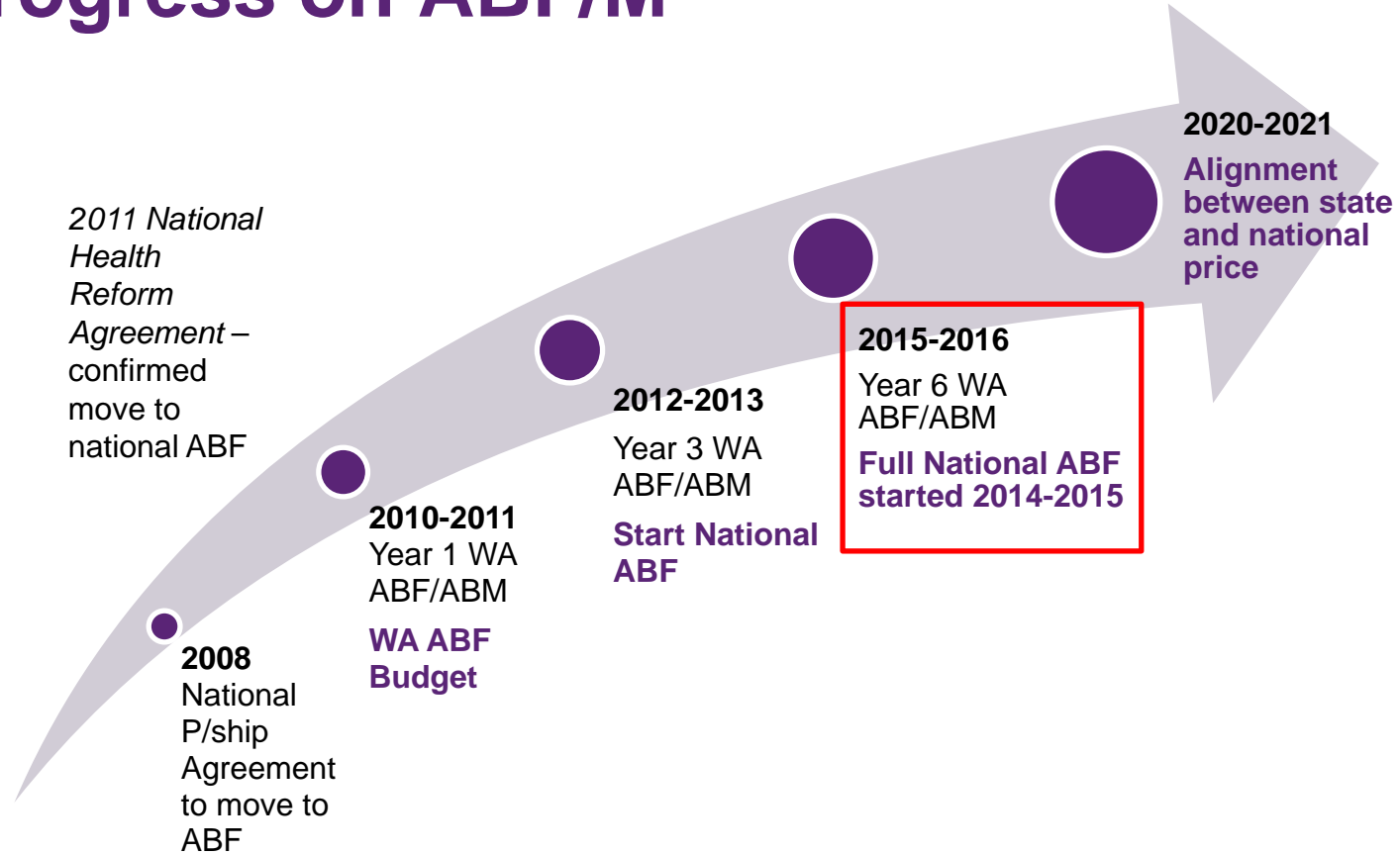
51 small hospitals

Specialist Palliative Care

31 sites/teams

4 private

Progress on ABF/M



The Key Challenge

From 1 July 2015, any subacute and non-acute activity that cannot be grouped to AN-SNAP will not attract premium Commonwealth funding.



Snapshot - WA



Care Type	Palliative
Data	Phases RUG-ADL
Systems	1 x Excel, 1 x Access database
Coverage	2 metropolitan sites
Data Gaps	Everywhere else!

Snapshot – Prices



Episode of Care (Palliative Care)			
Phase	Unstable (3105)	Deteriorating (3108)	Terminal
Rug-ADL	4-17	15-18	4-16
DRG Price*	\$3685.13	\$9212.83	\$7545.31
AN-SNAP	\$6178.73	\$11,412.53	\$9153.41

*Prices are estimates only and determined using IHPA 2014-15 Admitted Acute NWAU Calculator and IHPA 2014-15 Subacute NWAU Calculator

No, not easy

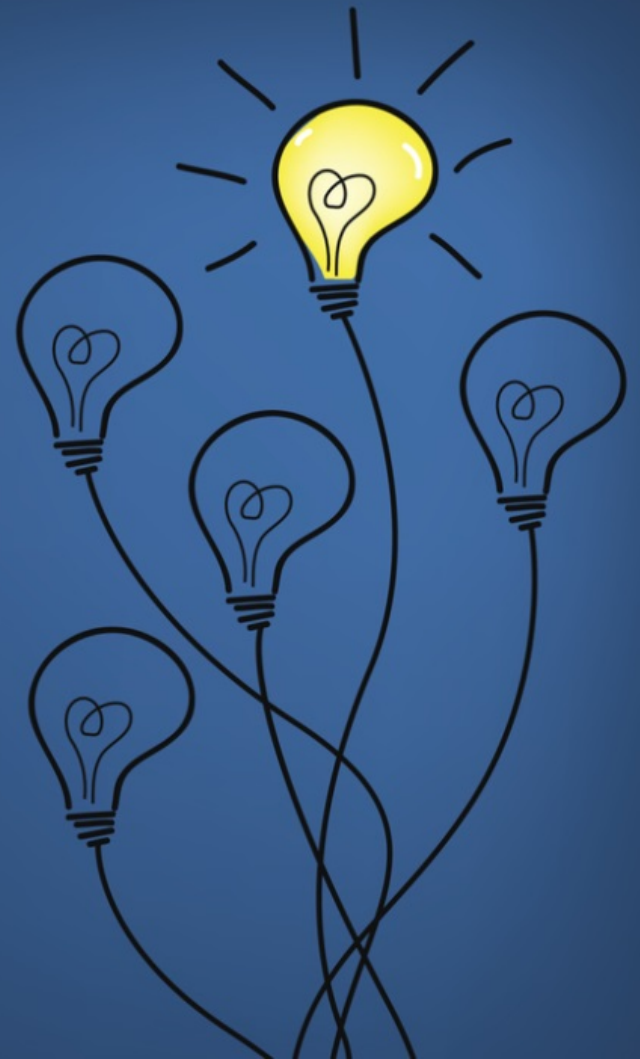
- Clinicians hesitant
- Disparate recording
- Competing agendas:
Hospital Standardised
Mortality Ratio (HSMR)
- What is palliative care?



A person's hands are visible at the bottom corners, holding a dark, ornate picture frame. The frame is positioned against a background of a sunset sky with soft, glowing clouds. The word "reframing" is printed in a bold, black, sans-serif font in the center of the frame's opening. The overall composition suggests a metaphorical act of redefining or reinterpreting a situation.

reframing

Engaging the right champions



Tailored education- Data Packages

Current groupings	Phases	RUG ADL Score	DRG Price	ANSNAP Price*
	Unstable (3105)	4-17	\$3685.13	\$6178.73
	Deteriorating (3108)	15-18	\$9212.83	\$11,412.53
	Terminal (3110)	4-16	\$7545.31	\$9153.41

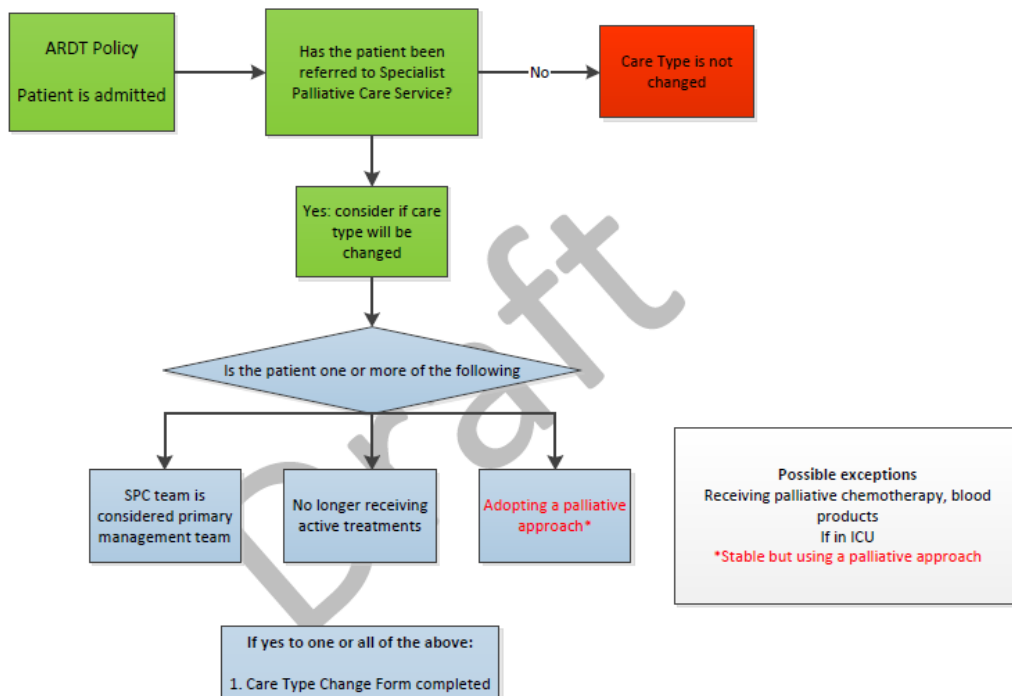
*Prices are estimates only and determined using IHPA 2014-15 Admitted Acute NWAU Calculator and IHPA 2014-15 Subacute NWAU Calculator

Ward	Account Number	Adm	Sep	Length of Stay	Principal Diag.	Principal Proc.	DRG V7	DRG Price	ANSNAP3	ABF Price
10B	27228299	02JUL2015	06JUL2015	4	G93.1	90179-06	B67A	2,290.16	3901	
10B	27239963	08DEC2015	09DEC2015	1	K70.4		H60A	921.28	3901	
10B	27145643	15JAN2016	20JAN2016	5	C79.5	95550-03	I65A	4,606.42	3901	
10B	27121699	23DEC2015	02JAN2016	10	J13.	92209-00	E62A	9,212.83	3901	
10A	27062263	28AUG2015	29AUG2015	1	G93.1		B67A	921.28	3901	
10A	27139709	07JUL2015	11JUL2015	4	G93.1	95550-03	B67A	3,685.13	3901	
10A	27169605	05NOV2015	06NOV2015	1	C78.6		G60A	921.28	3111	3,368.55
10A	27089919	09NOV2015	09NOV2015	1	L27.1		J68C	631.42	3111	3,015.05
10A	27150732	17SEP2015	18SEP2015	1	G30.0		B63Z	637.03	3106	4,310.99
10C	27056221	29JUL2015	29JUL2015	1	C90.00	92209-00	R61C	921.28	3111	3,368.55
10C	27169041	04AUG2015	15AUG2015	11	I64.	95550-01	B70B	10,134.12	3901	
10C	27079004	11AUG2015	11AUG2015	1	A40.8	92209-00	T60A	921.28	3111	3,368.55
10C	27113543	22JUL2015	22JUL2015	1	C90.00		R61C	921.28	3111	3,368.55
10C	27207864	07JUL2015	09JUL2015	2	K72.9		H63B	1,145.08	3901	
5G	27037206	18SEP2015	19SEP2015	1	J44.0	95550-03	E65A	921.28	3901	
5G	27170469	06NOV2015	07NOV2015	1	A41.9	95550-01	T60A	921.28	3901	
5G	27146346	29JUL2015	02AUG2015	4	S12.1	95550-03	I68A	3,685.13	3109	6,527.17
5G	27169608	31DEC2015	02JAN2016	2	I61.1		B70D	1,842.57	3901	

*Prices are estimates only and determined using IHPA 2014-15 Admitted Acute NWAU Calculator and IHPA 2014-15 Subacute NWAU Calculator

Clinician Engagement - Flow chart

Changing Care Type to Palliative Care: triggers for team discussion



The results are in...

Rolling out ePalCIS,
nominated data system
in 2016

Data available

Clinicians engaged



**LESSON
LEARNED**

Mutual Agendas
Tailored Data
Collaboration

Vi Tran | Project Officer
WA Cancer & Palliative Care
Network
Department of Health WA

Ground Floor, C Block
189 Royal Street
East Perth WA 6004
Phone : 08 9222 4063

Vi.Tran2@health.wa.gov.au

Any
Questions?

THANK YOU